

# 2025

## Company Profile

Shanghai Baud Data Communication Co., Ltd.

# 01

## Part

# About BDCOM

31-year expertise in networking product & solution  
Recognized industry leader in R&D and Manufacturing



# 31 Years of Technology Exploration



**1994**  
Established

**1200+**  
Employees

**\$300M+**  
Turnover

# R&D Center



Experienced PhD and Master engineers



Good numbers of product invention patents & software copyrights



# Test Center



Full-equipped testing instruments for hardware and software



Top-class international testing standards for stability and reliability.



# Production Bases

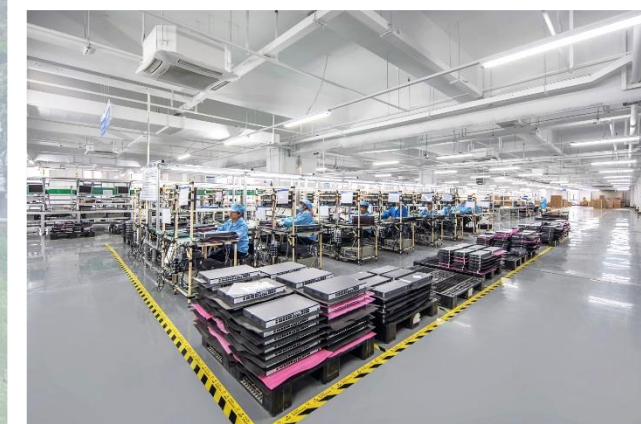


## Shanghai Jinshan High-end Manufacturing Center

Plant Area: 35,000 m<sup>2</sup>

Capacity: 1 million units per year

Focus: Telecom & Enterprise-grade products



# Production Bases

## Wuhan Optics Valley Manufacturing Center

Focus: Soho & SMB-grade products

Plant Area: 90000 m<sup>2</sup>

Capacity: 5 million units per year



# Production Bases

## Kunshan Manufacturing Center

Focus: Industrial-grade products

Plant Area: 10000 m<sup>2</sup>

Capacity: half million units per year



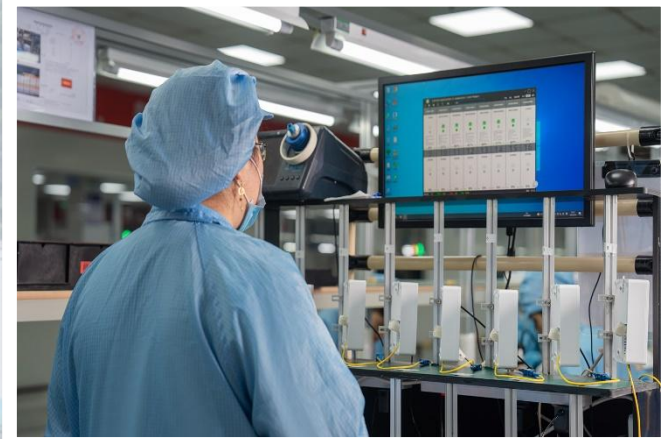
# Production Bases

## Dongguan Manufacturing Center

Focus: IoT & Consumer products

Plant Area: 20000 m<sup>2</sup>

Capacity: 3 million units per year



# Milestones



1994

Pioneer in X.25 Networking Card, significant breakthrough in China



1998

First-ever Chinese Router developed and launched into market



2005

First-generation Chassis Switches launched



2008

xPON solution developed and widely deployed in CATV industry



2012

Industrial-grade switches introduced to Energy and Transportation Industries



2017

WiFi product line added to BDCOM portfolio

1994

Four Founders

2001

Headquartered in Zhangjiang Hi-Tech Park also known as "China Silicon Valley"

2004

10th Anniversary Celebration

2007

Set foot in International markets

2016

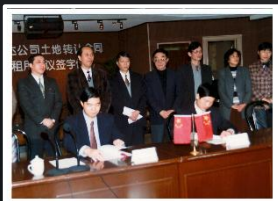
35000 m<sup>2</sup> Shanghai manufacturing center and 90000 m<sup>2</sup> Wuhan Manufacturing center put into operation

2021

overseas branch offices and support centers came into service

2024

30th Anniversary Celebration



# Qualifications



CMMI5



Software Backbone Enterprise  
Star Hi-Tech Enterprise  
Specialized “Little Giant” Enterprise  
Made-in-China Model Enterprise  
Shanghai Top 100 exporter  
E-government Top100 IT Firm



# Business Distribution



- 40+ major telecoms and countless ISPs and MSOs are using BDCOM products & solutions to service corporate and soho subscribers

- Growing numbers of successful cases from different industries deployed BDCOM wired & wireless solutions.

# Partners



Not fully included.....

# International Business



Global events: Exhibition, Seminar, Roadshow

# 02 Part

## Product & Solution



Switch



xPON



Router



Wireless



# Switch ↗

## Products and Solutions

One-stop switching solution covering from core, aggregation to access layer, Rich portfolio meeting all the requirements from different industries.

### Data Center Switch

S9500, S5800

### Core Switch

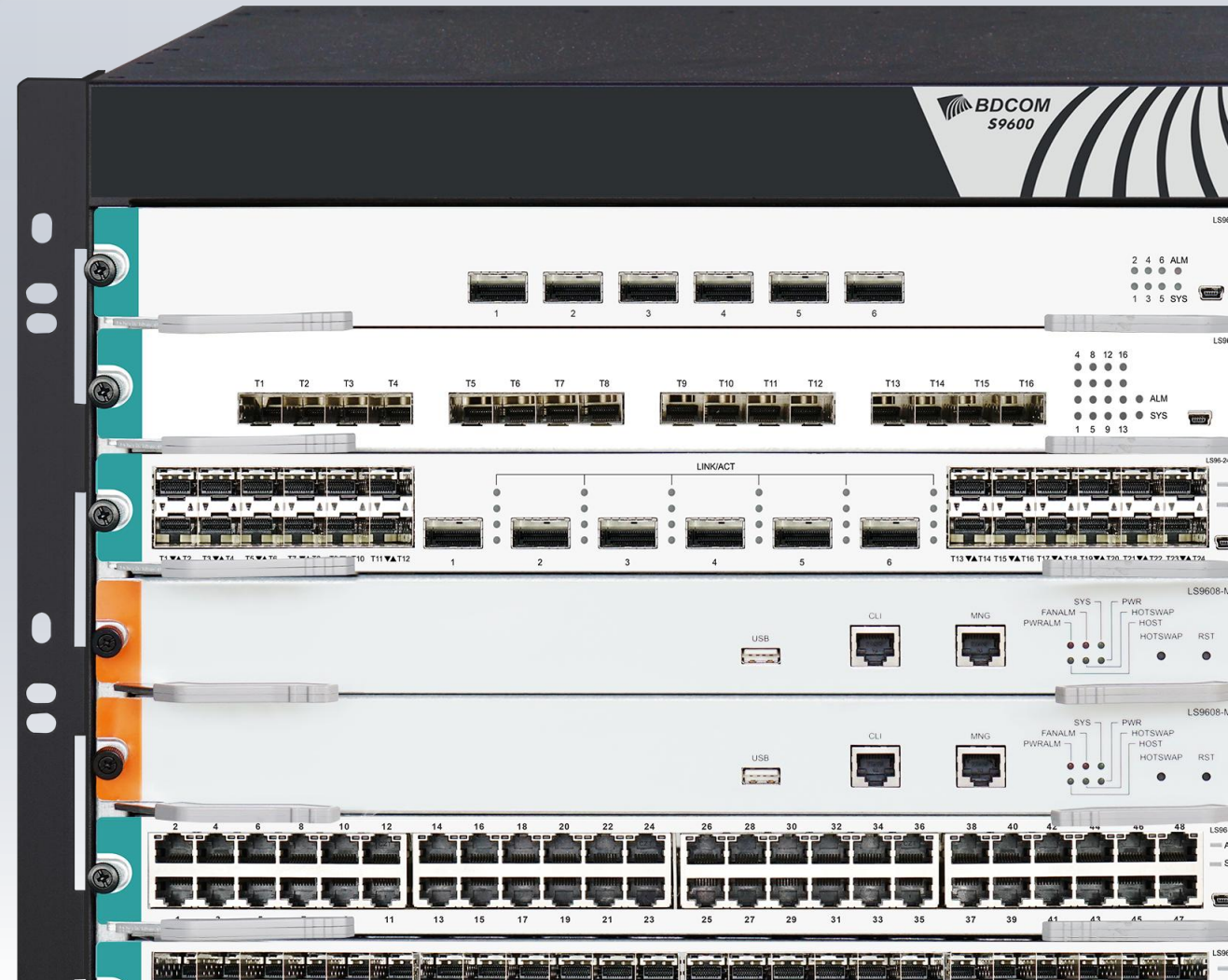
S8500E

### Layer-3 Switch

S5600, S5700  
S3900/PoE, S2900/PoE

### Access Switch

S2500/PoE, S1500/PoE,  
S1200/PoE, S1000/PoE



# Campus-grade Core Chassis

## S9600

Top-class reliability

Robust throughput

Innovative virtualization



S9614

S9608

# Enterprise-grade Core Chassis

## S8500E

Classic Series

- Oriented for 40GE platform and support carrier-level capacity and expandability.
- 99.999% high-usability.
- Innovative BVSS (BDCOM Virtual Stacking System) technique.
- Provide complete layer-2 and layer-3 multicast, routing and IPv6 solutions.



# SMB-grade Core Chassis

## S8003E

Disruptive box

- Multiple options of 10G line card with different port combination
- Rich features and friendly interface for L2 and L3 Switching Config
- Carrier-grade stability for future expansion



# L3 10G/100G Switch Series



• S5612E



• S5800-24X2C

• S5864HB

- **Carrier-grade reliability**
- **BVSS Stackability**
- **Multimodal Management**

Model	Specification
<b>S5612E</b>	12-Port 10G SFP+ 8-Port Gigabit RJ45
<b>S5800-24X2C</b>	24-Port 10G SFP+ 2-Port 100G QSFP28
<b>S5864HB</b>	48-Port 10G SFP+ 2-Port 40G QSFP+ 4-Port 40/100G QSFP28

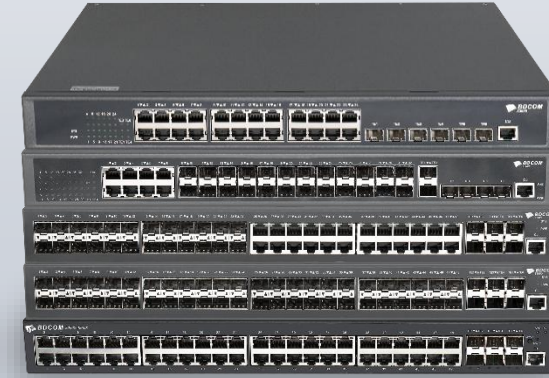
# L3 Switch

- Multi-Giga Solution

## S5700 Series



## S3900 Series



Model	Specification	Model	Specification
<b>S5700-8ET4X</b>	8-port 2.5G RJ45 + 4-port 10G SFP+	<b>S3900-24T6X</b>	24-port gigabit RJ45 + 6-port 10G SFP+
<b>S5700-8EP4X</b>	8-port 2.5G PoE++ 4-port 10G SFP+	<b>S3900-24S8T6X</b>	24-port gigabit SFP + 8-port gigabit RJ45 + 6-port 10G SFP+
<b>S5700-24ET6X</b>	24-port 2.5G RJ45 + 6-port 10G SFP+	<b>S3900-48M6X</b>	24-port gigabit SFP + 24-port gigabit RJ45 + 6-port 10G SFP+
<b>S5700-24EP6X</b>	8-port 2.5G PoE++ 16-port 2.5G PoE+ 6-port 10G SFP+	<b>S3900-48S6X</b>	48-port gigabit SFP + 6-port 10G SFP+
<b>S5700-48ET4X2Q</b>	48-port 2.5G RJ45 + 4-port 10G SFP+ 2-port 40G QSFP+	<b>S3900-48P6X</b>	48-port gigabit PoE+ 6-port 10G SFP+

# L3-lite Switch

## S2900 Series



## S2500 Series



Model	Specification	Model	Specification
<b>S2900-8T4X</b>	8-port gigabit RJ45 + 4-port 10G SFP+	<b>S2900-48P6X</b>	48-port gigabit PoE+ 6-port 10G SFP+, 370W AC PoE budget, 740W DC PoE budget
<b>S2900-8P4X</b>	8-port gigabit PoE+ 4-port 10G SFP+	<b>S2900-48P6X-370</b>	48-port gigabit PoE+ 6-port 10G SFP+, 370W AC PoE budget
<b>S2900-24T4X</b>	24-port gigabit RJ45 + 4-port 10G SFP+	<b>S2900-48P6X-760</b>	48-port gigabit PoE+ 6-port 10G SFP+, 760W AC PoE budget
<b>S2900-24S8C4X</b>	16-port gigabit SFP + 8-port gigabit RJ45/SFP combo + 4-port 10G SFP+	<b>S2500-8T2S</b>	8-port gigabit RJ45 + 2-port gigabit SFP
<b>S2900-48T4X</b>	48-port gigabit RJ45 + 4-port 10G SFP+	<b>S2500-8P2S</b>	8-port gigabit PoE+ 2-port gigabit SFP, 125W PoE budget
<b>S2900-48T6X</b>	48-port gigabit RJ45 + 6-port 10G SFP+	<b>S2500-24P4S</b>	24-Port Gigabit PoE+ 4-Port Gigabit SFP, 370W PoE budget
<b>S2900-24P4X</b>	24-port gigabit PoE+ 4-port 10G SFP+, 370W PoE budget	<b>S2500-24T4S</b>	24-port gigabit RJ45 + 4-port gigabit SFP
<b>S2900-48S6X</b>	48-Port gigabit SFP + 6-Port 10G SFP+	<b>S2500-24P4C</b>	24-port gigabit PoE+ 4-port gigabit RJ45/SFP combo, 370W PoE budget

# Unmanaged Switch



**S1000-P**



**S1200-P**



**S1500-P**



**S1500**

Model	Specification	Model	Specification
<b>S1000-4P2F</b>	4-port 100M PoE+ 2-port 100M RJ45, 60W PoE budget	<b>S1500-16P2S</b>	16-port gigabit PoE+ 2-port gigabit SFP, 180W PoE budget
<b>S1000-8P2F</b>	8-port 100M PoE+ 2-port 100M RJ45, 90W PoE budget	<b>S1500-24P2S</b>	24-port gigabit PoE+ 2-port gigabit SFP, 280W PoE budget
<b>S1200-8P2G</b>	8-port 100M PoE+ 2-port gigabit RJ45, 90W PoE budget	<b>S1500-24P2S-370</b>	24-port gigabit PoE+ 2-port gigabit SFP, 370W PoE budget
<b>S1200-16P2G1S</b>	16-port 100M PoE+ 2-port gigabit RJ45 + 1-port gigabit SFP, 180W PoE budget	<b>S1500-8T</b>	8-port gigabit RJ45
<b>S1200-24P2G1S</b>	24-port 100M PoE+ 2-port gigabit RJ45 + 1-port GE SFP, 280W PoE budget	<b>S1500-16T</b>	16-port gigabit RJ45
<b>S1200-24P2G1S-370</b>	24-port 100M PoE+ 2-port gigabit RJ45 + 1-port GE SFP, 370W PoE budget	<b>S1500-24T</b>	24-port gigabit RJ45
<b>S1500-8P2G</b>	8-port gigabit PoE+ 2-port GE uplink RJ45, 90W PoE budget	<b>S1500-24T2S</b>	24-port gigabit RJ45 + 2-port gigabit SFP

# Industrial

## Products and Solutions

BDCOM has three series of industrial Ethernet switches widely applied in the fields of rail transit, bridge, tunnel, smart grid, wind photovoltaic power, factory automation and industrial monitoring.

Smart grid solution  
Intelligent rail transit solution  
Safe City Solution





### IES200-V25

All-gigabit managed  
Industrial Ethernet  
Switch



### IES200-L25

All-gigabit managed  
Industrial Ethernet  
Switch

## Industrial Switch



### IES2000-T

Carrier-level LTE-mobile  
Backhaul Industrial  
Ethernet Switch



### IES2000

L3-lite Industrial  
Ethernet Switch

### ⚡ IES200-V25 Series

- 6, 10, 14-port DIN-rail series, with PoE/non-PoE models
- Operating temperature  $-40^{\circ}\text{C}\sim 75^{\circ}\text{C}/85^{\circ}\text{C}$ , IP40 protection, EMC4 level

### ⚡ IES200-L25 Series

- 6, 10, 12-port DIN-rail L3-lite series, with PoE/non-PoE models
- Operating temperature  $-40^{\circ}\text{C}\sim 75^{\circ}\text{C}$ , IP40 protection, EMC4 level

### ⚡ IES2000-T Series

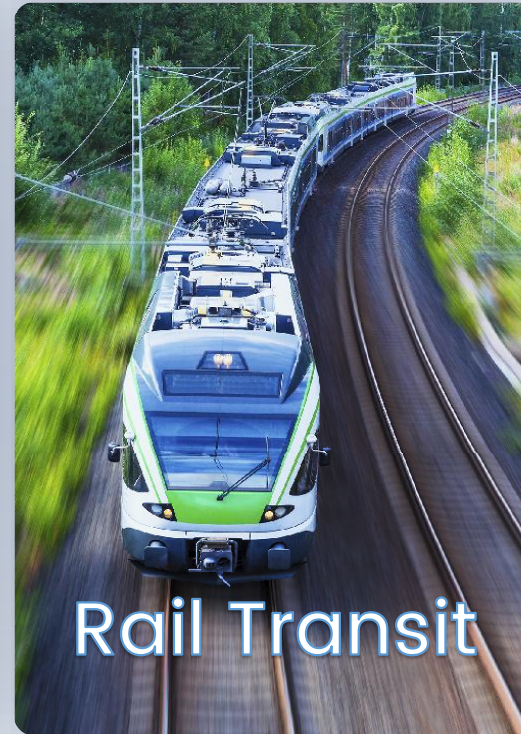
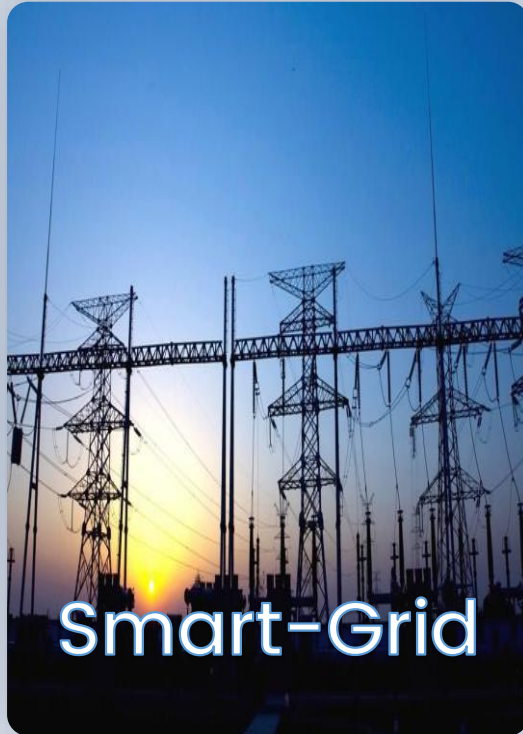
- Half-rack/Din-rail series, with PoE/non-PoE models
- Up to 20 GE + 4 10GE ports
- Supporting PTP 1588v2
- Operating temperature  $-40^{\circ}\text{C}\sim 85^{\circ}\text{C}$ , IP40 protection, EMC4 level

### ⚡ IES2000 Series

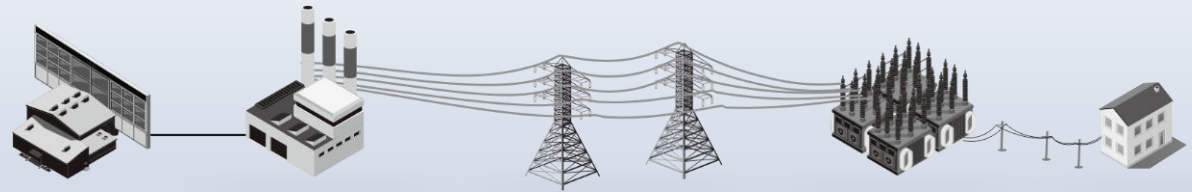
- 10G-up L3 rack-mounted stackable series
- Anticorrosive aluminum alloy chassis, corrugated conduction heat dissipation design
- Operating temperature  $-40^{\circ}\text{C}\sim 85^{\circ}\text{C}$ , IP40 protection, EMC4 level.



# Industrial Network Solutions



# Smart-Grid Solution



Generation

Transformation

Distribution

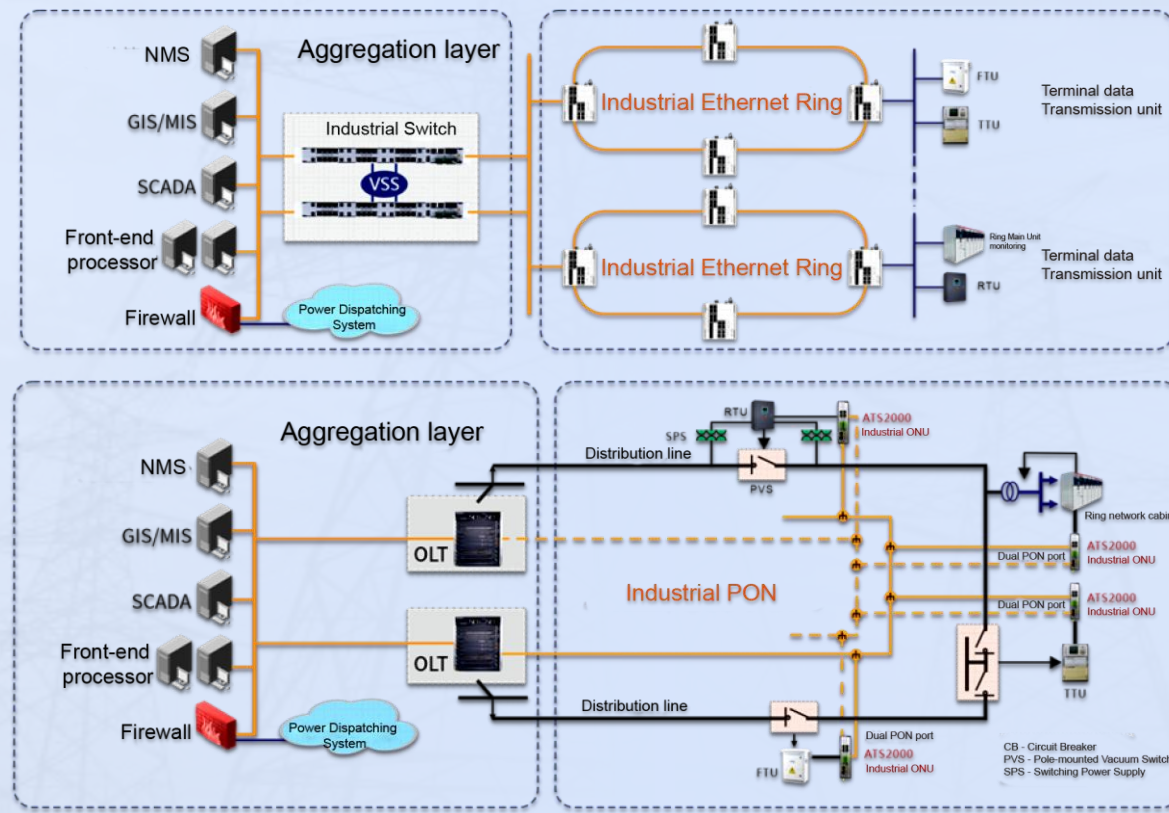
Usage

China Southern  
Power Grid

Industrial Switch

State Grid

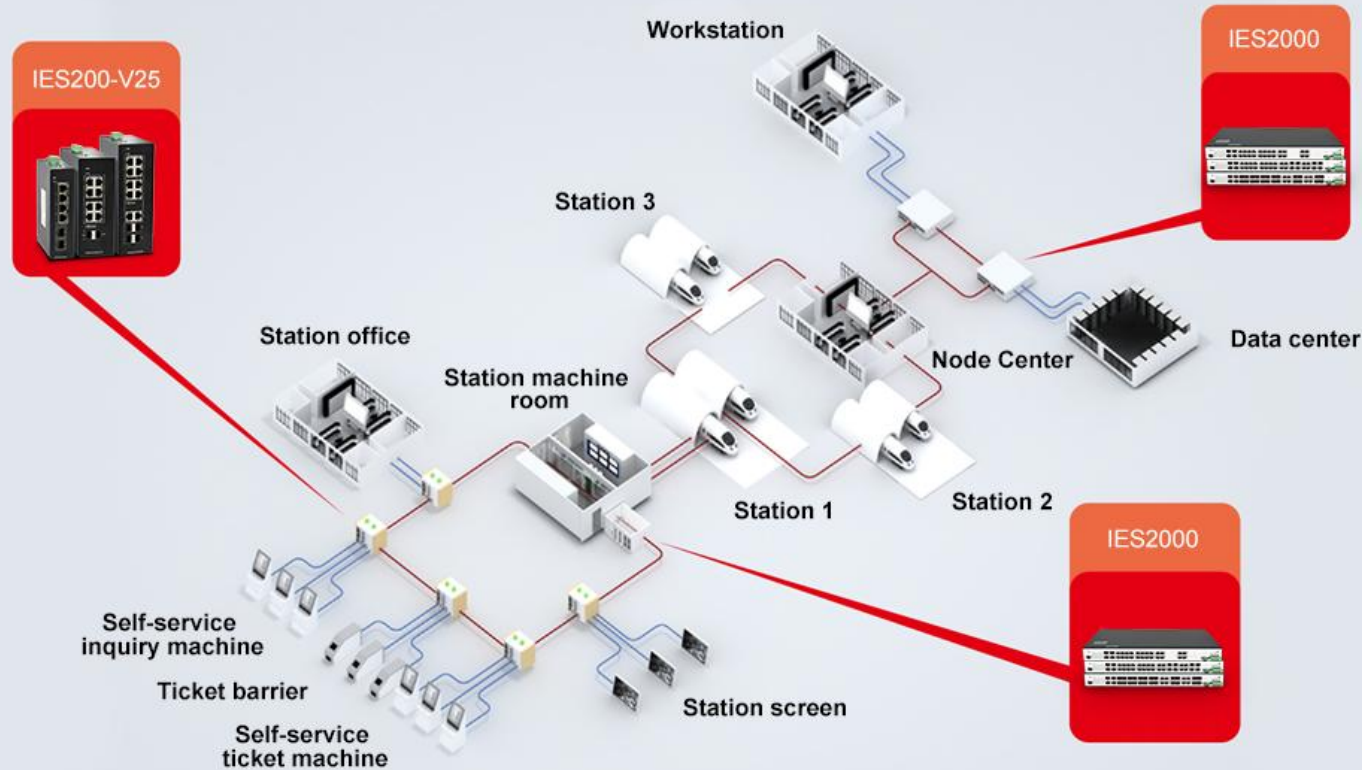
Industrial PON



- ✓ High reliability, self-healing in milliseconds
- ✓ Anti-interference, EMC4A
- ✓ Real-time, PTP1588 precise clock
- ✓ Multi-service access, optical Ethernet, RS232/485 serial port, POE power supply
- ✓ Reliability, dual PON ports, Type c hand in hand
- ✓ Anti-interference, EMC4A
- ✓ Wide coverage, easy to deploy
- ✓ Light operation and maintenance, strong security

# Rail Transit Solution

## Automatic Fare Collection System (AFC)



## Passenger Information System (PIS)

## Automatic Fare Collection System (AFC)

## Integrated Supervisory Control System (ISCS)

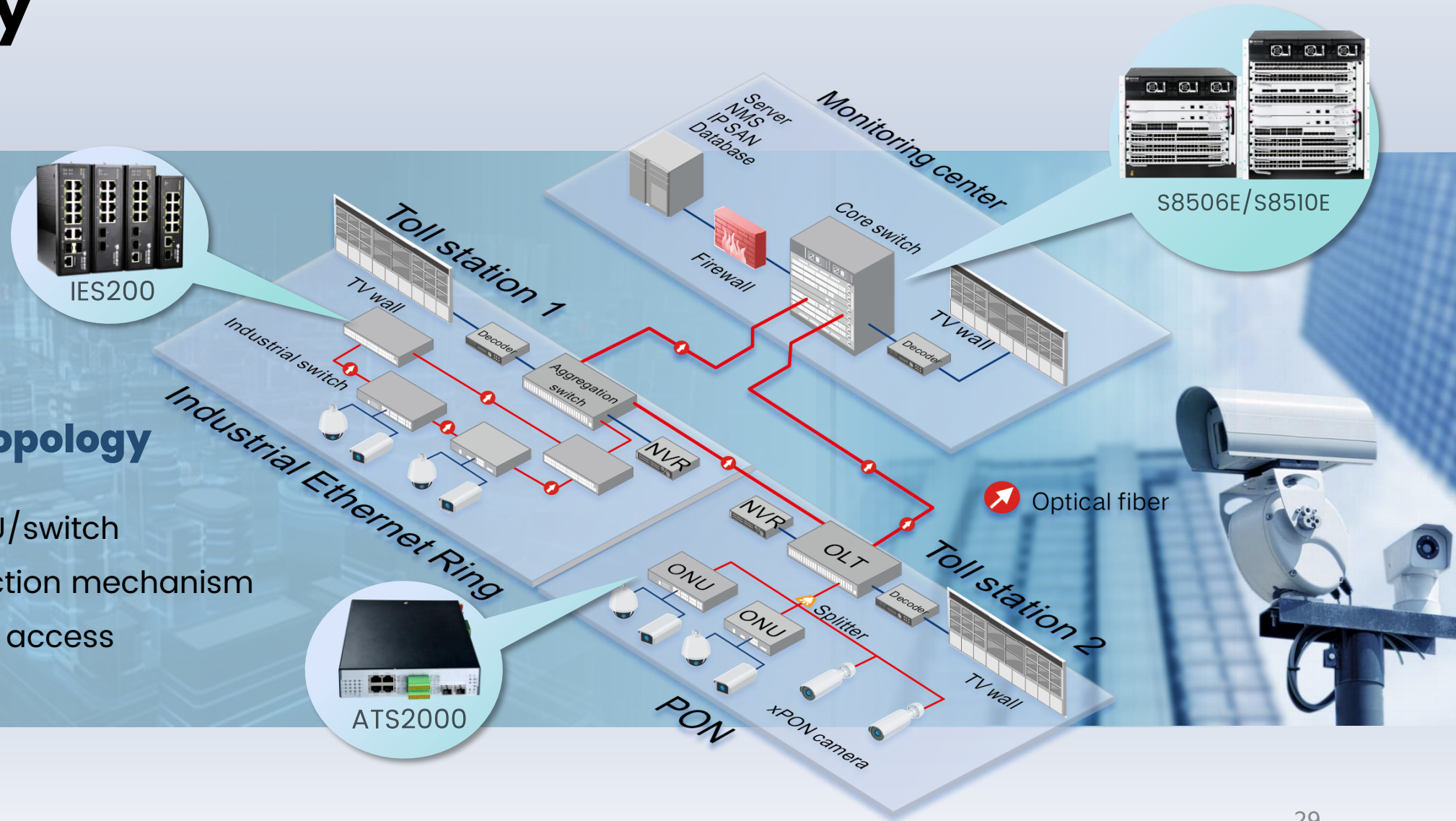
## Information Screening and Delivery System (ISDS)

# Safe City



## Solution Topology

- Industrial ONU/switch
- Perfect protection mechanism
- Rich business access



# xPON



## Products and Solutions

BDCOM has rich xPON product lines, covering EPON, GPON, 10GEPON, XG(S)PON.

POL Solutions  
FTTH Solutions





xPON Chassis



XG(s)-PON

## xPON Series



GPON



EPON

- xPON OLT: GP6606 Series
- GPON OLT: GP3600 Series
- EPON OLT: P3000 Series
- XG(s)-PON OLT: GP8600 Series

- Distributed architecture to meet line speed forwarding.
- Dual MCU and dual power supply redundancy, TypeB/C dual-homing protection, carrier-level reliability.
- Support access and aggregation integration of EPON/GPON/10GEPON/XG(s)PON/GE/10GE to reduce costs.
- Large capacity, high density, support up to 128 EPON/GPON and 64 10GEPON/XG(s)PON.
- Support routing function to achieve dual roles of PON access and core/aggregation.
- Support layer-3 routing

# ONU Family

Data ONU	 SFU	 In-wall SFU	 PoE+ MDU	 MDU
WiFi ONU	 WiFi4	 WiFi5	 WiFi6	
Voice ONU	 In-wall Voice	 WiFi5+ Voice	 WiFi6+ Voice	
CATV ONU	 SFU	 WiFi4+ CATV	 WiFi5+ CATV	 WiFi6+ CATV



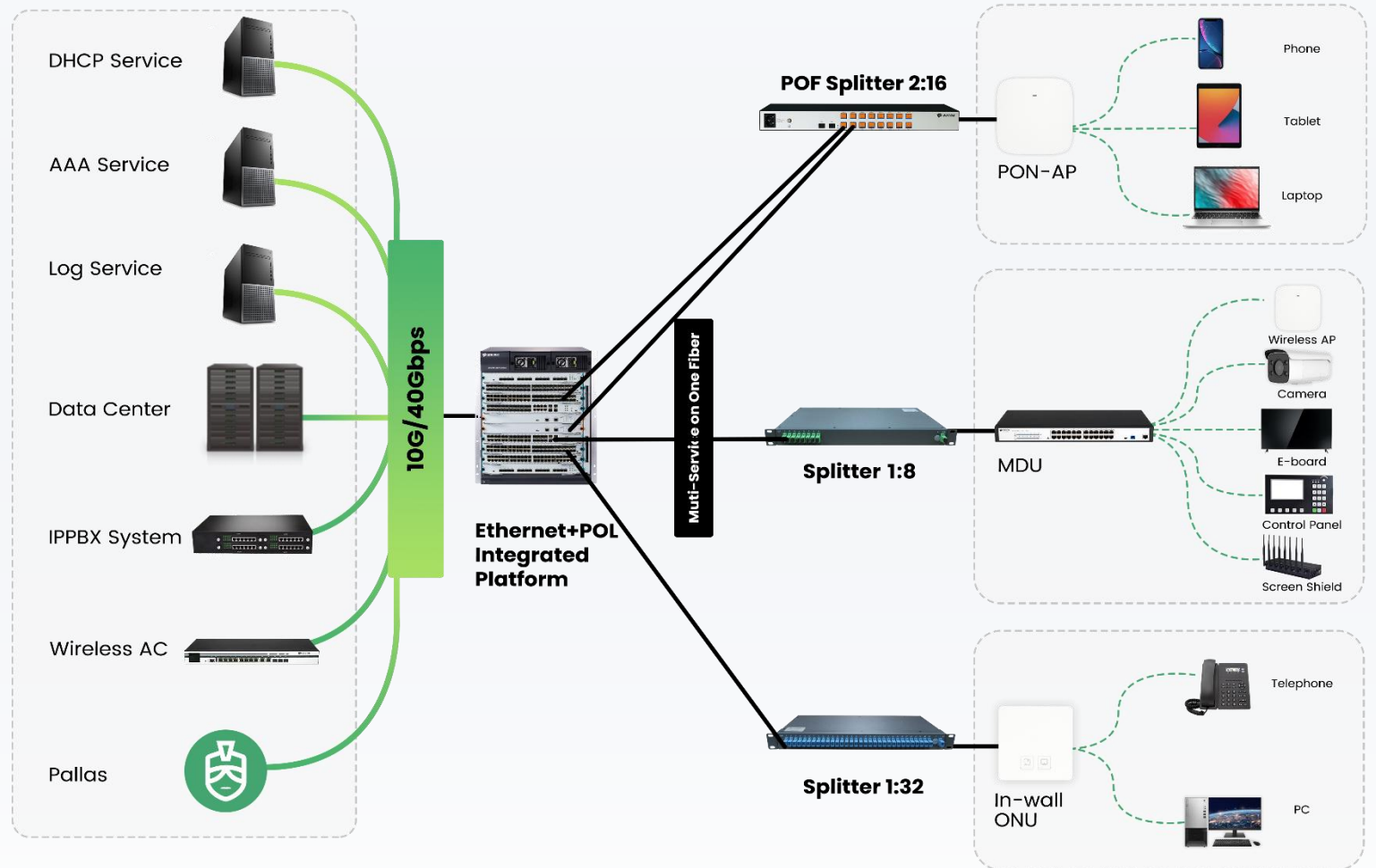
# xPON Series Solutions



# Passive Optical LAN Solutions

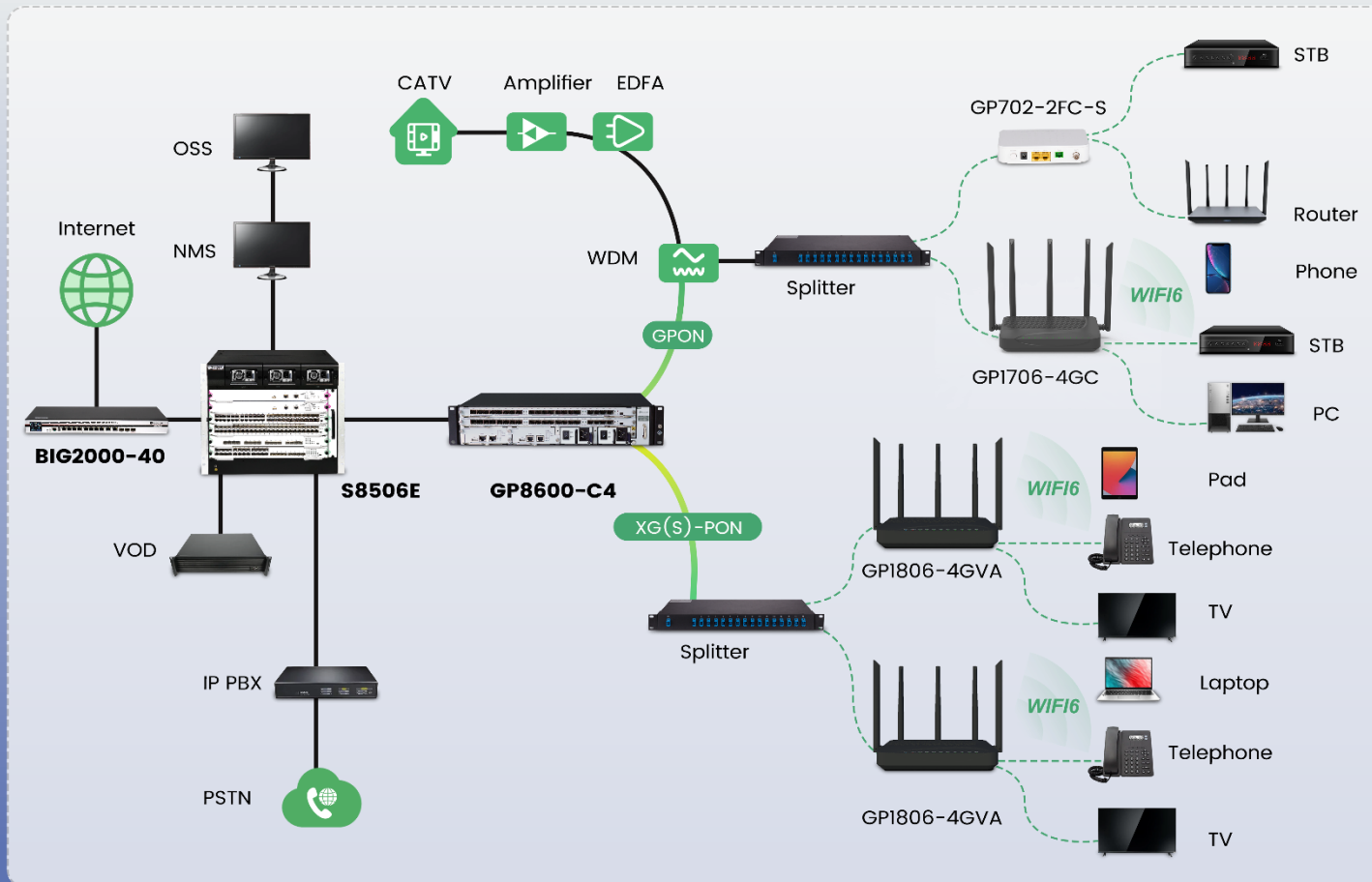
## POL Solution:

- Passive ODN occupies small space, which reduces construction investment and energy consumption
- Simple and convenient deployment
- Few failure points, to facilitate maintenance and management
- Multi-service integration;
- Unified management;
- Smooth upgrade to 10G, 40G;
- Reduced overall cost .



# FTTH Solutions

Support Ultra HD Gigabit access



## Smooth evolution

- ✓ Sharing platform of EPON, GPON, 10GEPON, XG(S) PON
- ✓ Support 4K HD devices

## Service quality assurance

- ✓ Large bandwidth, support multi-service IP
- ✓ Dual fiber three wave, single fiber three wave, IPTV terminal
- ✓ Support QoS to guarantee important services

# Router & Wireless



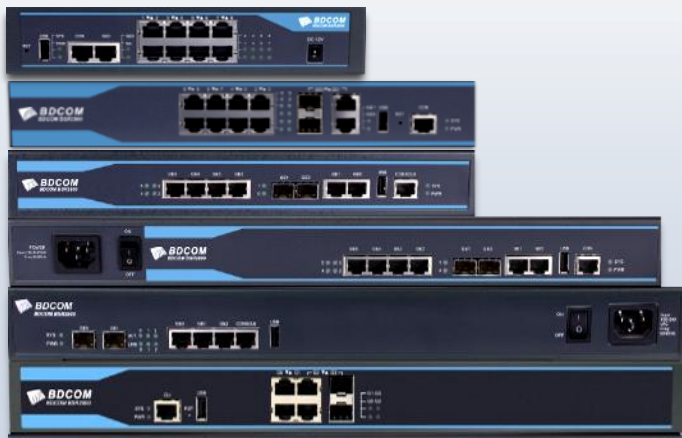
BDCOM Commercialized Router: No. 001  
Access Certificate of MIIT, vendor partner of  
Chinese Operators, multi-service supported.

◎Router series    ◎BIG Converged Gateway

Provide users with full-scene, high-quality  
wireless solutions.

◎WAP series    ◎Wireless AC Series





Multi-service Router



## Multi-service Router

- Multi-service supported
- IPv4/v6 dual stack
- Operator's centralized procurement specifications
- WAN modules such as serial port, E1.
- 4G/5G network access capabilities
- APN private network, VPN encryption, safe and reliable
- Centralized management in the cloud

# Router series



## Converged Gateway

- Router+switch+access controller+firewall+flow control all-in-one device, saving OPEX
- Multiple functions in one device, saving money.
- Few failure point, saving energy.
- LCD visual operation and cloud maintenance, saving time.



Converged Gateway

# Wireless AP Series



## Ceiling-mounted Wireless AP

- WiFi5/WiFi6 chip solutions
- High-density wireless coverage
- Stable connection
- Fully automatic seamless roaming

## Outdoor Wireless AP

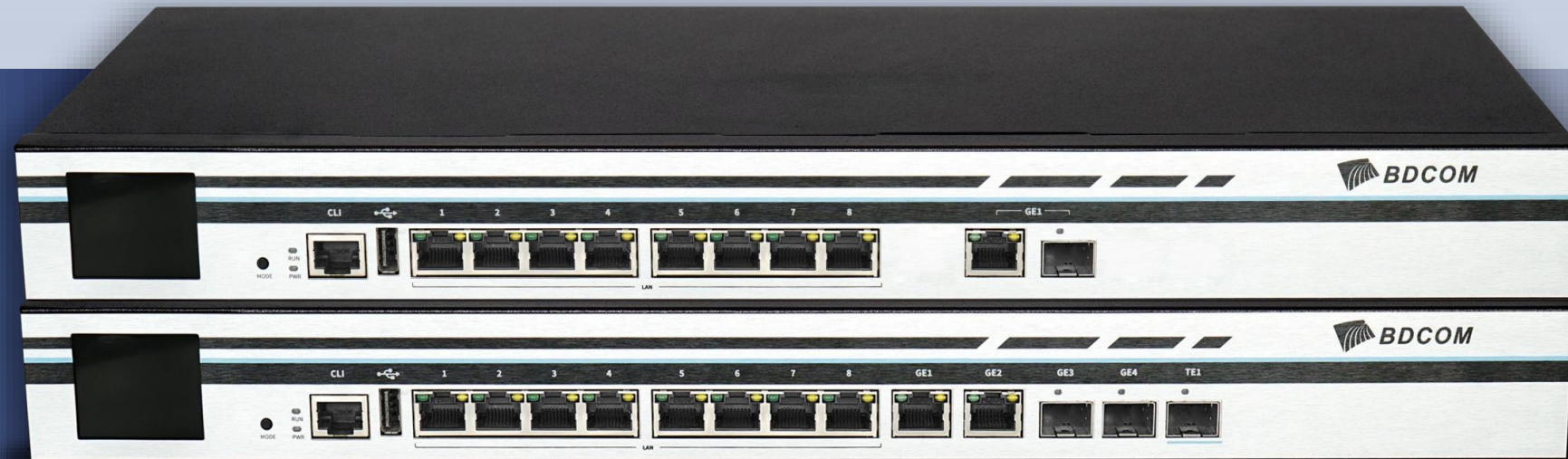
- High power and wide coverage
- Various antenna accessories
- Waterproof, dustproof, anti-thunder
- Built-in smart antenna

## In-wall Wireless AP

- Optimized antenna design
- Switchable LED
- Energy-saving

# Wireless AC Series

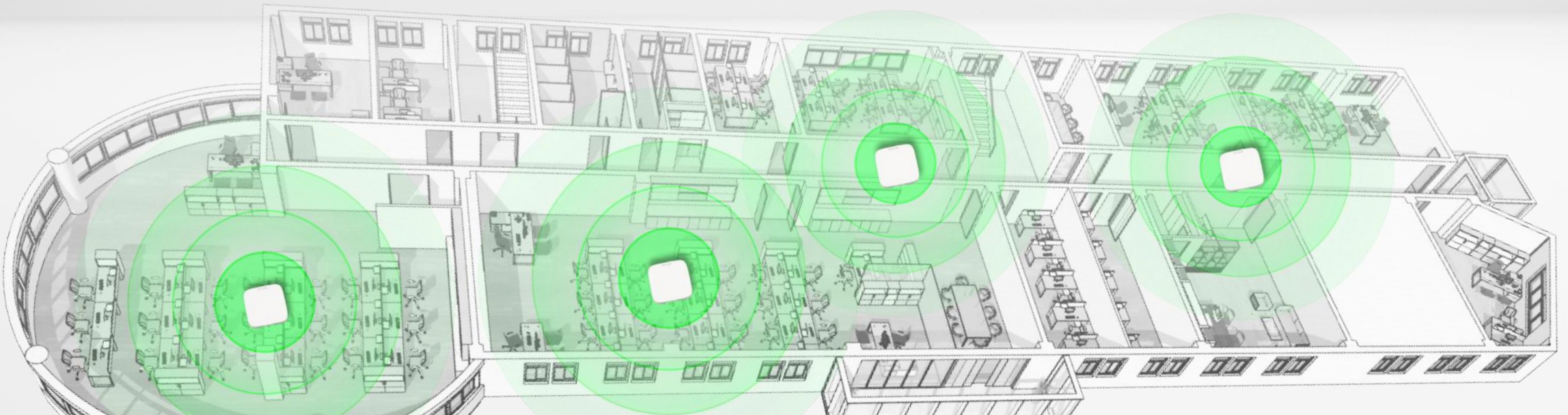
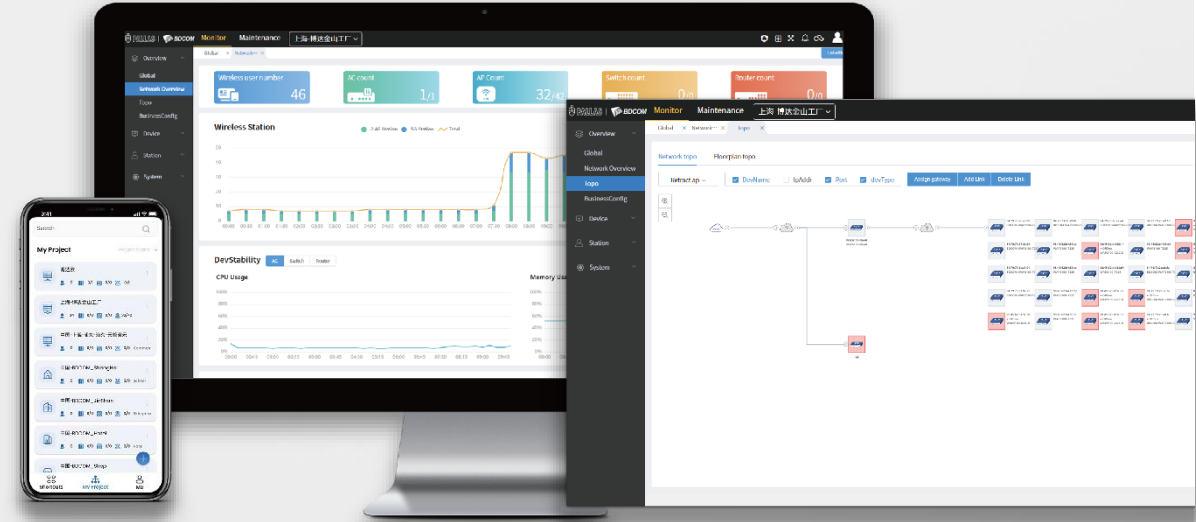
- Flexible network deployment
- Unaware mobile roaming experience
- Integration of routing, AC and authentication
- Easy-to-use cloud management and O&M





# Pallas: Cloud-based Operating Platform

- ✓ Supports unified access of six product lines including router, switch, xPON, and wireless.
- ✓ Supports rapid deployment, device management, automatic topology-drawing, network operation and maintenance, log alarms, etc.
- ✓ Easy-to-operate web interface.
- ✓ Supports APP to control the network anytime, anywhere.
- ✓ Supports cloud, local, and cluster deployments.



# 03

## Part



# Application

Sustainable business up to the value added for partners & customers



Telecom



ISP



MSO



Manufacturing



Education



Energy



Healthcare



Retail



Transportation



Government



Hospitality

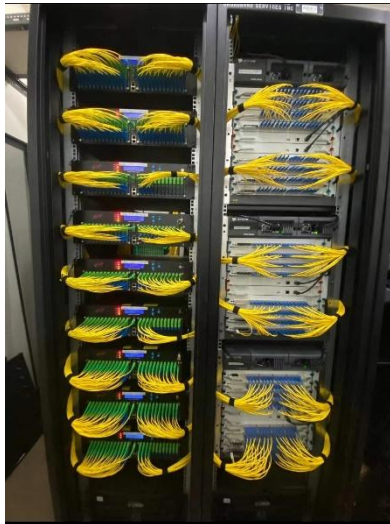


Finance

# Service Provider

50000000  
units running lively

100+  
Countries



## Partners >>

- |             |              |          |            |                  |
|-------------|--------------|----------|------------|------------------|
| •Reliance   | •MPT         | •COL     | •Indosat   | •DCTV            |
| •Rostelecom | •Planetcable | •LG U+   | •Broadlink | •Telkom          |
| •BeeLine    | •Viettel     | •KT      | •MTS       | •Herotel         |
| •NT         | •BOL         | •SCTV    | •Megfon    | •Hyundai Telecom |
| •ETB        | •TIS         | •BracNet | •Singtel   | •Globe telecom   |

# Enterprise Network

## Healthcare

Brazil Instituto De Olhos De Rondonia  
Thailand Queen Sirikit National Institute  
Bangladesh Popular Hospital  
Islami Bank Foundation (IBF) Hospital

## Government

Vietnam Cao Bang Provincial Museum  
Nepal Chandragiri Municipal Corporation  
Brazil São Caetano do Sul  
Bangladesh BEPZA

## Financial

Mumbai Stock Exchange  
Singapore DBS Bank  
Central Bank of Myanmar  
Russia Sberbank  
Russia Tax Bureau

## Hospitality

Indonesia JHL 5 star Hotel  
Vietnam Novotel 4-star hotel  
Dhaka Sarina 4-star Hotel  
InterContinental Doha  
Hilton Hotels & Resort

## Education

Singapore Ministry of Education  
Busan Ministry of Education  
University of Dhaka  
Bangladesh CUET  
Bangladesh Uttara University  
India National Universities

## Manufacturing

Sri Lanka Dipped Products PLC  
Iraq Al SSAD  
Bangladesh Noman Group  
Bangladesh Pacific Jeans Group  
Bangladesh PRAN-RFL

## Transportation

New Delhi Metro Station  
India West Zone Railway  
Incheon International Airport  
Bangladesh Saidpur Railway station

## Energy

Indonesia PLN group  
Philippine NGCP  
Rupar Nuclear Power Plant  
Barapukuria Coal-fired Power Plant  
China National Grid

## Retail

Philippines Acienda Outlet Mall  
Cambodia AEON Mall 3  
Wuhan New Beauties Fashion Plaza  
Bangladesh Bashundhara City



# Thank You



One-stop solution covering  
multiple lines & levels



Strong capacity of R&D  
and Manufacturing



Rich experience serving  
Partners & Customers